

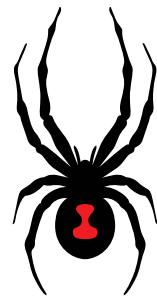


SPYDER

2019 IMPRINTABLE APPAREL







SPYDER

## BLAZING A NEW TRAIL

For more than three decades Spyder has combined iconic product design for athletes worldwide who seek performance and self-expression. 365 days a year they Prepare, Perform, and Live. Adapting across multiple activities, seasons, and products, Spyder embraces athletic pursuit from mountain to metro.

You now have the opportunity to outfit your team in 31 exciting athletic inspired styles.

Spyder products purchased must be sold only with embellishment. Sale of Spyder on the internet or elsewhere without embellishment is strictly forbidden. Failing to comply with these policies will result in loss of privileges for selling the Spyder brand.



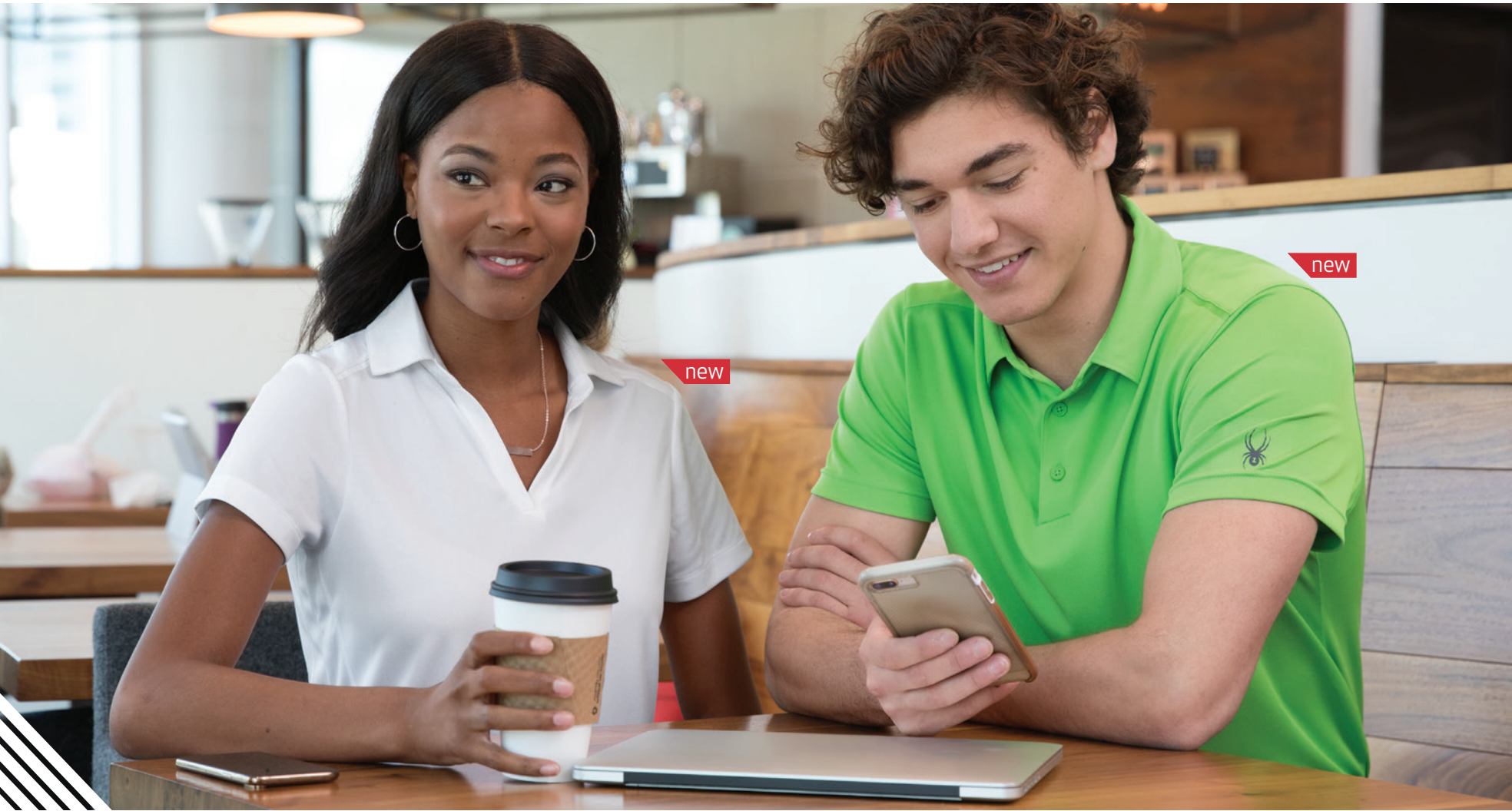
S16798 LADIES' FREESTYLE HALF-ZIP PULLOVER



SH16792 ADULT FROSTBITE CAP  
S16797 MEN'S FREESTYLE HALF-ZIP PULLOVER







new

new

S16519 LADIES' FREESTYLE POLO  
S16532 MEN'S FREESTYLE POLO

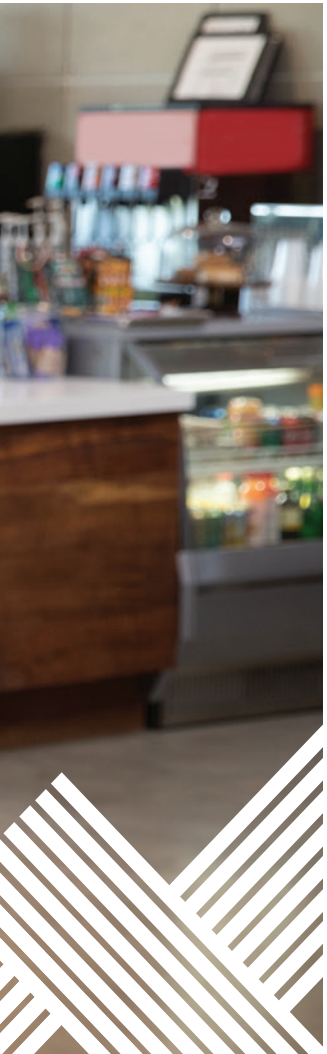


new

new

S16544 MEN'S BOUNDARY POLO  
S16563 LADIES' BOUNDARY POLO





S16533 MEN'S PEAK POLO



S16564 LADIES' PEAK POLO



S16561 MEN'S CONSTANT HALF-ZIP SWEATER



S16562 LADIES' CONSTANT HALF-ZIP SWEATER





187330 MEN'S CONSTANT FULL-ZIP SWEATER



187335 LADIES' CONSTANT FULL-ZIP SWEATER



S16536 MEN'S HAYER FLEECE HOODY  
S16521 LADIES' HAYER FLEECE HOODY





SH16791 ADULT CONSTANT SWEATER  
TRUCKER CAP  
SH16794 ADULT CONSTANT SWEATER BEANIE



187331 LADIES' HAYER FULL-ZIP FLEECE HOODY



187332 MEN'S TRANSPORT QUARTER-ZIP  
FLEECE PULLOVER





S16539 MEN'S VENOM FULL-ZIP JACKET



S16522 LADIES' VENOM FULL-ZIP JACKET



S16640 MEN'S CAPTURE QUARTER-ZIP FLEECE  
S16639 LADIES' CAPTURE QUARTER-ZIP FLEECE





S16538 MEN'S VENOM VEST  
S16523 LADIES' VENOM VEST





187333 MEN'S PELMO PUFFER JACKET  
187336 LADIES' SUPREME PUFFER JACKET





S16642 MEN'S PELMO PUFFER VEST  
S16641 LADIES' SUPREME PUFFER VEST



187334 MEN'S TRANSPORT SOFT SHELL JACKET  
187337 LADIES' TRANSPORT SOFT SHELL JACKET



new



new



new

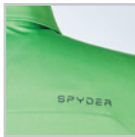


new

S16532 \$40.00 (C)

**MEN'S FREESTYLE POLO**

- 100% polyester textured mesh - 140 GSM
- three-button placket with Spyder branded 3 mm buttons
- heat seal tape in shoulder seams
- side vents
- Spyder branding on back right shoulder
- iconic Spyder bug logo on wearer's left sleeve



SIZES: S-3XL

S16519 \$40.00 (C)

**LADIES' FREESTYLE POLO**

- 100% polyester textured mesh - 140 GSM
- stylized open placket
- heat seal tape in shoulder seams
- angled princess seams
- side vents
- drop tail back hem
- Spyder branding on back neckline
- iconic Spyder bug logo on wearer's left sleeve



SIZES: XS-2XL

S16544 \$50.00 (C)

**MEN'S BOUNDARY POLO**

- 89% polyester, 11% spandex jersey - 185 GSM
- two-button placket with Spyder branded 3 mm buttons
- back shoulder yoke
- side vents
- Spyder branding on back neckline
- iconic Spyder bug on wearer's left sleeve



SIZES: S-3XL

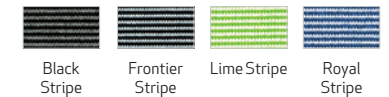
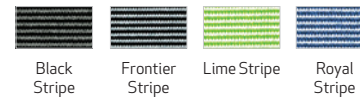
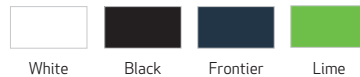
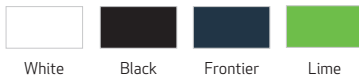
S16563 \$50.00 (C)

**LADIES' BOUNDARY POLO**

- 89% polyester, 11% spandex jersey - 185 GSM
- stylized open placket
- princess seam details
- Spyder branding on back neckline
- iconic Spyder bug on wearer's left sleeve



SIZES: XS-2XL



All prices subject to change without notice.





new



new



S16533 \$60.00 (C)

**MEN'S PEAK POLO**

- 90% polyester, 10% elastane jersey - 190 GSM
- three-button covered placket with Spyder branded 3 mm buttons
- heathered front and back body
- vent details at hem
- iconic Spyder bug logo center back



SIZES: S-3XL

S16564 \$60.00 (C)

**LADIES' PEAK POLO**

- 90% polyester, 10% elastane jersey - 190 GSM
- faux collar
- heathered front and back body
- princess seams
- Spyder branding on back
- Silver iconic Spyder bug on left sleeve



SIZES: XS-2XL

187330 \$99.00 (C)

**MEN'S CONSTANT FULL-ZIP SWEATER**

- 100% polyester sweater knit bonded to fleece - 340 GSM
- custom Spyder knit jacquard
- brushed micro-denier tricot inner collar
- active fit
- reverse coil center front zipper
- raglan sleeves
- zippered hand-warmer pockets
- Spyder branding on back neckline
- iconic Spyder bug logo on left bicep

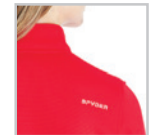


SIZES: S-3XL

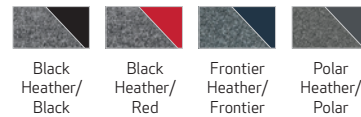
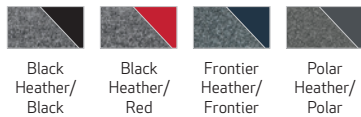
187335 \$99.00 (C)

**LADIES' CONSTANT FULL-ZIP SWEATER**

- 100% polyester sweater knit bonded to fleece - 340 GSM
- custom Spyder knit jacquard
- brushed micro-denier tricot inner collar
- active fit
- princess seams for a feminine silhouette
- reverse coil center front zipper
- zippered hand-warmer pockets inset into princess seams
- Spyder branding on back right shoulder
- iconic Spyder bug logo on left bicep



SIZES: XS-2XL





new

S16561 \$99.00 (C)  
**MEN'S CONSTANT HALF-ZIP SWEATER**

- custom Spyder knit jacquard bonded to fleece - 340 GSM
- brushed microfiber inner collar
- stretch fleece panels at underarm and side body
- hidden on-seam front pockets
- Spyder branding on back neckline
- iconic Spyder bug on left sleeve

SIZES: S-3XL



new

S16562 \$99.00 (C)  
**LADIES' CONSTANT HALF-ZIP SWEATER**

- custom Spyder knit jacquard bonded to fleece - 340 GSM
- brushed microfiber inner collar
- stretch fabric panels at underarm and side body
- hidden on-seam front pockets
- princess seam details
- Spyder branding on back neckline
- iconic Spyder bug on front left waist

SIZES: XS-2XL



new

S16797 \$50.00 (C)  
**MEN'S FREESTYLE HALF-ZIP PULLOVER**

- 100% polyester textured mesh - 140 GSM
- dye-to-match zipper with reflective tape
- reverse coil center front zipper with Spyder logo zipper pull
- side vents
- Spyder branding on back neckline
- iconic Spyder bug on left sleeve

SIZES: S-3XL



new

S16798 \$50.00 (C)  
**LADIES' FREESTYLE HALF-ZIP PULLOVER**

- 100% polyester textured mesh - 140 GSM
- dye-to-match zipper with reflective tape
- princess seam details
- thumbhole detail
- drop tail back hem
- reverse coil center front zipper with Spyder logo zipper pull
- Spyder branding on back neckline
- iconic Spyder bug lower left front

SIZES: XS-2XL



Black/Black    Black Heather/Black    Frontier/Black    Polar/Black



Black/Black    Black Heather/Black    Frontier/Black    Polar/Black



Black    Frontier    Polar    Red



Royal



Black    Frontier    Polar    Red



Royal





187334 \$119.00 (C)

**MEN'S TRANSPORT SOFT SHELL JACKET**

- 94% polyester, 6% spandex soft shell fabric
- water-resistant
- three-layer fabric with X.T.L. laminate
- micro-brushed tricot chin and inner trim accents
- active fit
- reverse coil center front zipper
- zippered hand-warmer pockets
- zippered chest pocket
- asymmetrical seam accents
- Spyder branding on back right shoulder
- iconic Spyder bug logo on left bicep

SIZES: S-3XL



187337 \$119.00 (C)

**LADIES' TRANSPORT SOFT SHELL JACKET**

- 94% polyester, 6% spandex soft shell fabric
- water-resistant
- three-layer fabric with X.T.L. laminate
- micro-brushed tricot chin and inner trim accents
- active fit
- reverse coil center front zipper
- zippered hand-warmer pockets
- zippered chest pocket
- asymmetrical seam accents
- Spyder branding on back right shoulder
- iconic Spyder bug logo on left bicep

SIZES: XS-2XL



187333 \$129.00 (C)

**MEN'S PELMO PUFFER JACKET**

- 100% polyester nail-head weave fabric
- 100% synthetic down insulation - 300 GSM
- micro-brushed tricot inner collar piecing
- water-resistant
- active fit
- invisible zipper inside chest for embroidery access
- zippered hand-warmer pockets
- Spyder branding on back right shoulder
- iconic Spyder bug logo on left bicep

SIZES: S-3XL



187336 \$129.00 (C)

**LADIES' SUPREME PUFFER JACKET**

- 100% polyester nail-head weave fabric
- 100% synthetic down insulation - 300 GSM
- micro-brushed tricot inner collar piecing
- water-resistant
- active fit
- invisible zipper inside chest for embroidery access
- princess seams for feminine silhouette
- zippered hand-warmer pockets inset into princess seams
- Spyder branding on back right shoulder
- iconic Spyder bug logo on left bicep

SIZES: XS-2XL





187331 \$79.00 (C)  
**LADIES' HAYER FULL-ZIP FLEECE HOODY**

- 92% polyester, 8% spandex stretch fleece - 300 GSM
  - active fit
  - hood
  - thumbholes
  - zippered hand-warmer pockets inset into princess seams
  - drop tail
  - Spyder branding on left bicep
  - iconic Spyder bug logo on front left waist
- SIZES: XS-2XL



187332 \$79.00 (C)  
**MEN'S TRANSPORT QUARTER-ZIP FLEECE PULLOVER**

- 100% polyester microfleece - 180 GSM
  - active fit
  - quarter-length zipper
  - contrast zippered chest pocket
  - Spyder branding on back neckline
  - iconic Spyder bug logo on left chest
- SIZES: S-3XL



new

S16642 \$99.00 (C)  
**MEN'S PELMO PUFFER VEST**

- 100% polyester nail-head weave fabric
  - 100% synthetic down insulation - 300 GSM
  - water-resistant
  - micro-brushed tricot inner collar piecing
  - active fit
  - detachable hood with bungee cord stopper
  - invisible zipper inside chest for embroidery access
  - zippered hand-warmer pockets
  - Spyder branding on back right shoulder
  - iconic Spyder bug logo on front right waist
- SIZES: S-3XL



new

S16641 \$99.00 (C)  
**LADIES' SUPREME PUFFER VEST**

- 100% polyester nail-head weave fabric
  - 100% synthetic down insulation - 300 GSM
  - water-resistant
  - micro-brushed tricot inner collar piecing
  - active fit
  - detachable hood with bungee cord and stopper
  - invisible zipper inside chest for embroidery access
  - zippered hand-warmer pockets inset into princess seams
  - Spyder branding on back right shoulder
  - iconic Spyder bug logo on front right waist
- SIZES: XS-2XL







new



new



new



new

S16538 \$75.00 (C)

**MEN'S VENOM VEST**

- fabric mix of neoprene fabric and 100% polyester bonded knit with polyfill channels
- invisible seam front pockets
- Spyder branding on back right shoulder
- iconic Spyder bug logo on front left zipper chest pocket



SIZES: S-3XL



Black Polar

S16523 \$75.00 (C)

**LADIES' VENOM VEST**

- fabric mix of neoprene fabric and 100% polyester bonded knit with polyfill channels
- active fit
- reverse coil center front zipper with Spyder logo zipper pull
- princess seam details
- invisible seam front pocket
- Spyder branding on back neckline
- iconic Spyder bug logo on left bottom hem



SIZES: XS-2XL



Black Polar

S16539 \$99.00 (C)

**MEN'S VENOM FULL-ZIP JACKET**

- fabric mix of neoprene fabric and 100% polyester bonded knit with polyfill channels
- reverse coil center front zipper with Spyder logo zipper pull
- Spyder branded zipper closer on chest pocket
- Spyder branding on back right shoulder
- iconic Spyder bug logo on front left-chest pocket



SIZES: S-3XL



Black Polar

S16522 \$99.00 (C)

**LADIES' VENOM FULL-ZIP JACKET**

- fabric mix of neoprene and 100% polyester bonded knit with polyfill channels
- active fit
- dye-to-match front zipper with reflective tape
- princess seam details
- zippered front pockets
- Spyder branding on back neckline
- iconic Spyder bug logo on left bottom hem



SIZES: XS-2XL



Black Polar



new

S16640 \$80.00 (C)

**MEN'S CAPTURE QUARTER-ZIP FLEECE**

- 100% polyester bonded knit with polyfill channels
- reverse coil quarter zipper
- reverse coil center front zipper with Spyder logo zipper pull
- Spyder branding on back neckline
- embroidered iconic Spyder bug logo on left sleeve

SIZES: S-3XL



Black Polar



new

S16639 \$80.00 (C)

**LADIES' CAPTURE QUARTER-ZIP FLEECE**

- 100% polyester bonded knit with polyfill channels
- dye-to-match quarter zipper with reflective tape
- reverse coil center front zipper with Spyder logo zipper pull
- Spyder branding on back neckline
- embroidered iconic Spyder bug logo on left sleeve

SIZES: XS-2XL



Black Polar



new

S16536 \$65.00 (C)

**MEN'S HAYER FLEECE HOODY**

- 92% polyester, 8% spandex power fleece
- four-way stretch fabric
- dye-to-match matte tape at pockets
- iconic Spyder bug logo on hood

SIZES: S-3XL



Black Frontier Polar



new

S16521 \$65.00 (C)

**LADIES' HAYER FLEECE HOODY**

- 92% polyester, 8% spandex power fleece
- four-way stretch fabric
- thumbholes
- matte tape at pockets
- Spyder branding on back
- iconic Spyder bug logo on hood

SIZES: XS-2XL



Black Frontier



Polar







new

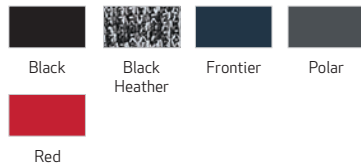
SH16791 \$20.00 (C)

**ADULT CONSTANT SWEATER TRUCKER CAP**

- custom Spyder knit jacquard front two panels and bill
- trucker mesh back panels
- snapback closure
- memory fit band
- branded Spyder inner taping
- iconic Spyder suede sonic weld logo patch



SIZES: ONE SIZE



new

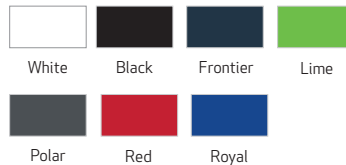
SH16792 \$20.00 (C)

**ADULT FROSTBITE CAP**

- polyester/spandex blend
- moisture-wicking comfort sweatband
- foam memory fit panel
- branded Spyder inner taping
- iconic Spyder logo sonic weld



SIZES: ONE SIZE



SPYDER

**SIZE CHART**

Men's Sizing	S	M	L	XL	2XL	3XL
Chest	39"	42"	45"	48"	51"	54"
Hip	33"	36"	39"	42"	45"	48"
Sleeve Length	32.5"	33.5"	34.5"	35.5"	36.5"	37.5"

Ladies' Sizing	XS	S	M	L	XL	2XL
Chest	33"	35"	37.5"	41.5"	46"	48"
Hip	35"	37"	39.5"	43.5"	48"	50"
Sleeve Length	30"	30.75"	31.5"	32.25"	33"	33.375"



new

**SH16794 ADULT CONSTANT SWEATER BEANIE**

- custom Spyder knit jacquard with inside microfleece lining
- iconic Spyder bug suede logo patch left of back seam

SIZES: ONE SIZE





SPYDER

asi/34063  
19SPYD

